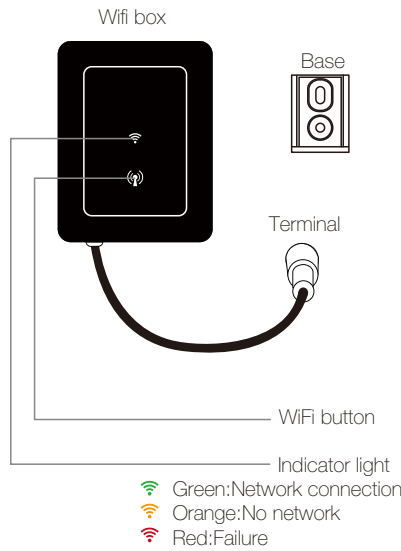
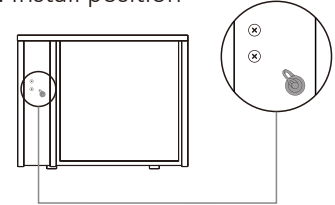


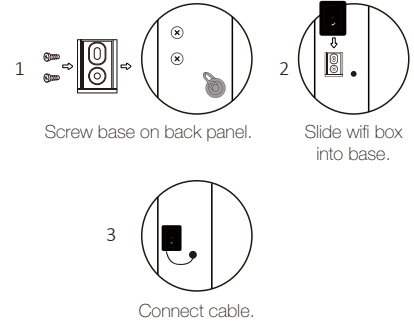
a.Components



b. Install position



c. Installation



1. APP Download



Android mobile please download from

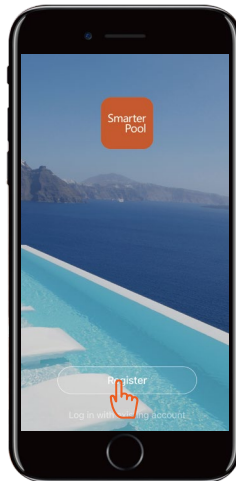


iphone please download from

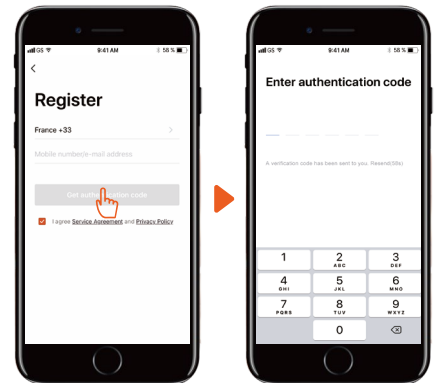


2. Account registration

1. Registration by Cell phone number/Email



2. Email registration



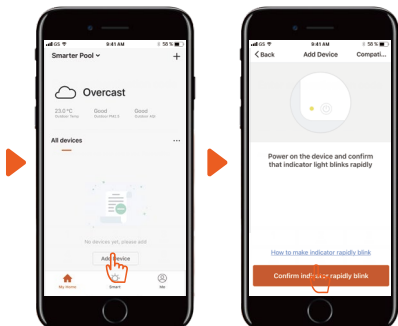
3. APP Binding

Please make sure your cell phone has connected the Wifi

1. Press Wifi button (Ⓜ) for 3 seconds until the light in quick flashing.

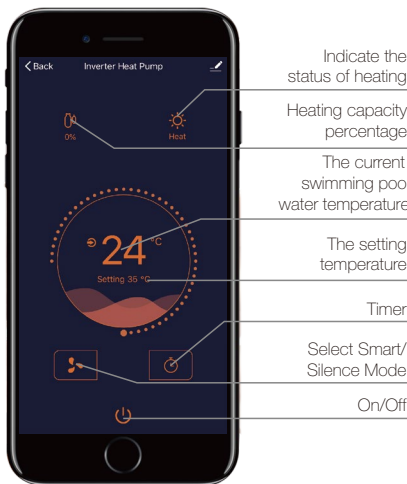


2. Click "Add device", follow indication to finish binding.

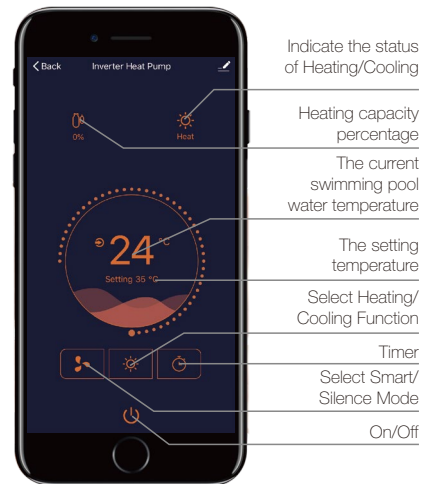


4. Operation

1. For heat pump with Heating function only :



2. For heat pump with Heating&Cooling function :



Notice:
1. If wifi signal can not cover machine, please connect 10 m extend cable (optional, not standard configuration).
2. The weather forecast is just for reference.

APP is subject to updating without notice.