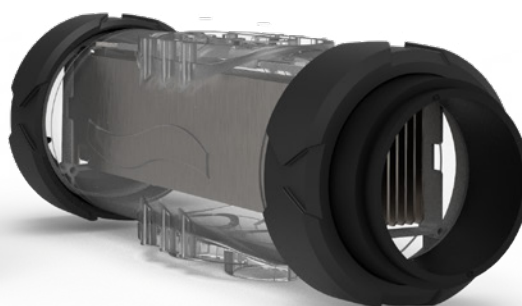


Minisalt®

Saltwater chlorinator

Pool
TECHNOLOGIE

HeatPumps
4Pools 



Benefits

- Intuitive navigation on Led display
- Light warning alarm
- High quality self cleaning cell
- Low Salt / Normal Salt mode (depending on model)
- Easy installation and assembly

Features

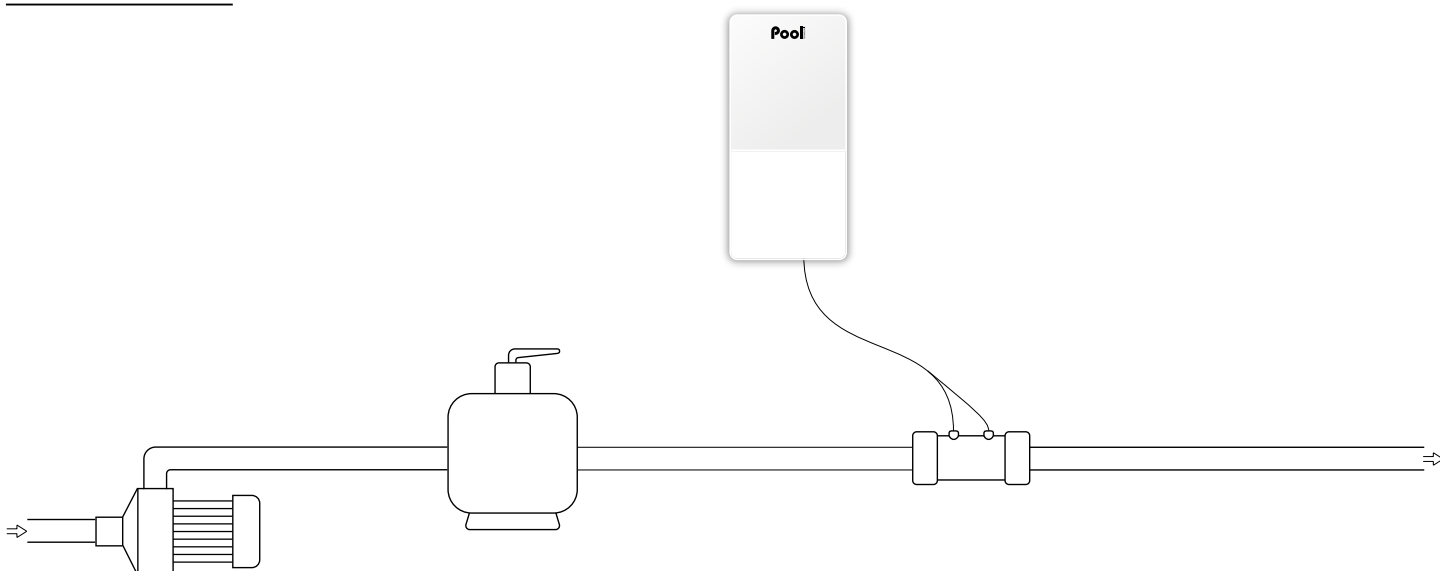
- **Boost mode:** current monitoring ensuring stable production
- Self cleaning cell by memory adjustable polarity inversion according to water hardness
- Operate at any salt level from 2,5 g/l (NS) and 1,5 g/l (LS) without high limit
- **Boost mode:** 100% superchlorination for up to 24 hours to overcome an increased need of disinfectant
- **Low mode** to reduce chlorine production, when cover closed or bubbles cover installed
- **Safeties :** lack of water, low salt, cell fault

Model	Pool volume* (m ³)	Chlorine production (g/h)	Reference
Minisalt NPS 4	20	4	ELLY20NPSB-G0NM04
Minisalt NPS 8	40	8	ELLY20NPSB-G0NM08
Minisalt NPS 12	60	12	ELLY20NPSB-G0NM12
Minisalt NPS 16	NS 80 / LS 60	NS 16 / LS 12	ELLY20NPSB-G0HX16
Minisalt NPS 23	NS 120 / LS 80	NS 23 / LS 16	ELLY20NPSB-G0HX23
Minisalt NPS 30	NS 160 / LS 120	NS 30 / LS 23	ELLY20NPSB-G0HX30

*In hot climates, reduce the volume by 20% - NS : Normal Salt (5 g/l) / LS : Low Salt (1.5 g/l)

Technical specifications	
Display	led display
Cell installation	in line
Cell orientation	horizontal or vertical
Cell length (mm)	225
Maximum pressure in the cell (bar)	2
Maximum flow in the cell (m ³)	22 or By-pass
Maximum water temperature (°C)	40
Control panel size (mm)	W 140 x H 300 x D 97

Installation diagram



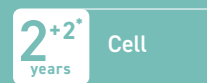
Content

- Control box
- Chlorination cell
- Cell cable (2 m)
- Power cable (2 m)
- Collar diam 63 mm x2
- Reducer 63/50 mm x2
- Wall support (with screws)
- User manual

Options

- Independent flow switch
- Pool Terre grounding kit
- Fluted fittings kit for above ground pools
- Collar diameter 50 mm x2

Warranties



* See a retailer